

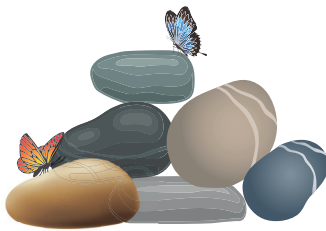


CREATE A BUTTERFLY GARDEN!

Butterflies are bio-indicators of a healthy environment and ecosystem- they are highly sensitive to changes in climate, pollution levels, and air pollution. Butterflies are an important part of the food chain and excellent pollinators after bees, wasps and flies - without these wonderful insects, we would have a lot fewer plants!

1 SELECT SITE FOR BUTTERFLY GARDEN

Choose a site that has some sun but is also sheltered from the wind. Include a few trees and shrubs for roosting at night and for cooling off on the hottest days.



2 REMEMBER THE ROCKS

Add one or two large, flat rocks in the sun so butterflies have a place to bask when mornings are cool.

3 PROVIDE WATER

Since butterflies cannot drink from open water, provide them with a "puddle" by filling a container, such as an old birdbath, with wet sand where they can perch and drink safely.



4 ADD THE PLANTS

Add nectar and food plants. Different butterfly larvae feed on different plants, so research the butterflies native to your region to determine what to plant.



FUN FACT-

Butterflies have taste sensors on their feet which help female butterflies to identify their host plants